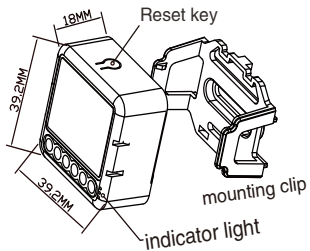


INSTRUCTION MANUAL

2CH Zigbee Switch Module-L



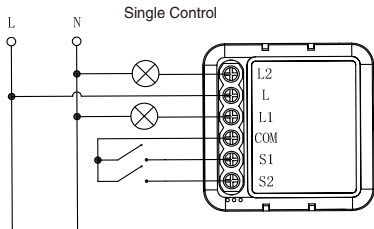
RoHS



function Introduction:

- Both the adjustment on App and switch can overwrite each other, the last adjustment remains in memory.
- The App control is synchronized with the manual switch.
- Manual switching interval greater than 0.3s.
- You can select the switch type on the APP(Please use this function in wired gateway).

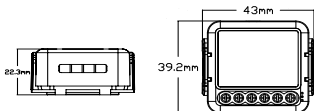
Warnings : Do not connect the neutral line,Otherwise it will be permanently damaged.



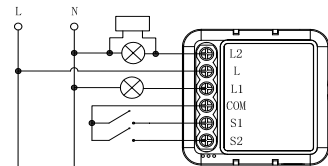
TECHNICAL SPECIFICATIONS

Product type	2CH Zigbee Switch Module-L
Voltage	AC200-240V 50/60Hz
Max.load	2x(10-100W)
peration frequency	2.405GHz-2.480GHz
IEEE802.15.4	
Operation temp.	-10℃ + 40℃
Protocol	Zigbee 3.0
Operation range	<100m
Dims (WxDxH)	39.2x39.2x18 mm
IP rating	IP20
Warranty	2years
Certificates	CE ROHS

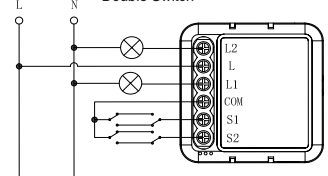
with mounting clip



Wiring diagram of fittings(L1 L2 One of them)



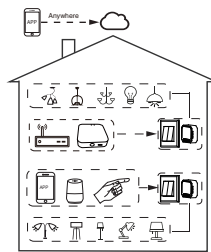
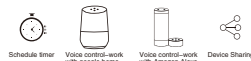
Double Switch



Wiring Instructions and Diagrams

- Turn off the power supply before carrying out any electrical installation work.
- Connect wires according to the wiring diagram.
- Insert the module into the junction box.
- Turn on the power supply and follow switch module con guration instructions.
- If the light flashes after turning off, please connect the accessories.

Global international operation Whenever & Wherever You are,All-in-one Mobile App



Inhouse local operation



FAQ

Q1: What should I do if I can't configure the switch module?

- Please check whether device is powered on.
- Make sure the Zigbee Gateway is available.
- Whether it's in good internet conditions.
- Make sure the password entered in App is correct.
- Make sure the wiring is correct.

Q2: What device can be connected to this Zigbee switch module?

Q3: What happens if the WIFI goes off? Most of your household electrical appliances, such as lamps, laundry machine, coffe maker, etc. You can still control the device connected to the switch module with your traditional switch and once WIFI is active again the device connected to module will connect automatically to your WIFI network.

Q4: What should I do if I change the WIFI network or change the password?

You have to re-connect our Zigbee switch module to the new Wi-Fi network accordingly as per the App User

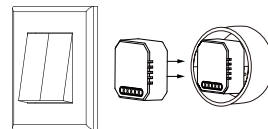
Q5: How do I reset the device?

- Switch on/off the traditional switch for 5 times until the indicator light flash.
- Press the reset key for about 5 seconds until the indicator light flash.

INSTALLATION

▲ Warnings:

- Installation must be carried out by a qualified electrician in accordance with local regulations.
- Keep the device out of reach of children.
- Keep the device away from water , damp or hot environment.
- Install the device away from strong signal sources such as microwave oven that may cause signal interruption resulted to abnormal operation of the device.
- Obstruction by concrete wall or metallic materials may reduce the effective operation range of the device and should be avoided.
- Do NOT attempt to disassemble,repair or modify the device.



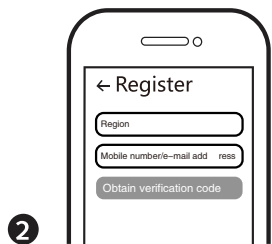
APP USER



IOS APP / Android APP

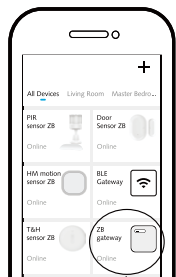


Scan the QR code to download Tuya Smart App, or you can also search keyword "Tuya Smart" at App Store or Googleplay to download App.



2

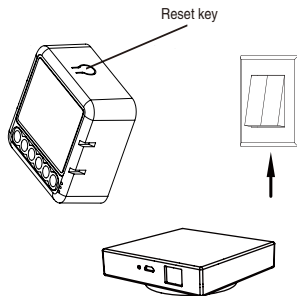
Login or register your account with your mobile number or e-mail address. Type in the verification code sent to your mobile or mail box, then set your login password. Click "Create Family" to enter into the APP.



3

Open the control panel of the ZigBee gateway on the App

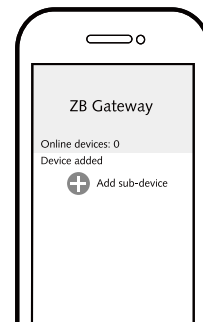
Before making the reset operation, pls make sure the Zigbee Gateway is added and installed to the WIFI network. Ensure that the product is within the range of Zigbee Gateway Network.



4

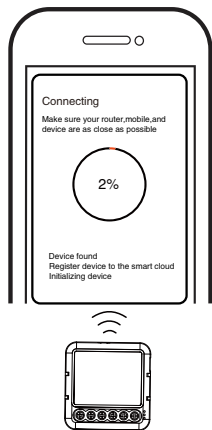
Zigbee Gateway

After the wiring of switch module is done, press the reset key for about 5 seconds or turn on/off the traditional switch for 5 times until the indicator light inside the module is flashing quickly for pairing.



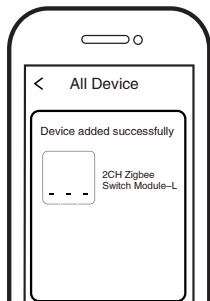
5

Click "+" (Add sub-device) to select the suitable product gateway and follow the on-screen instruction for pairing.



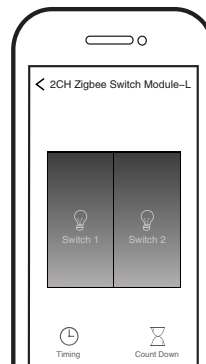
6

The connecting will take about 10-120 seconds to complete depending on your network condition.



7

Finally, you can control the device via your mobile phone.



8

Finally, you can control the device via your mobile phone.

SYSTEM REQUIREMENTS

- WiFi® Router
- ZigBee gateway
- iPhone, iPad (iOS 7.0 or higher)
- Android 4.0 or higher

